



Coastal Risk Management Programme

Coastal Defence Scheme – Rover Way to Lamby Way Tip

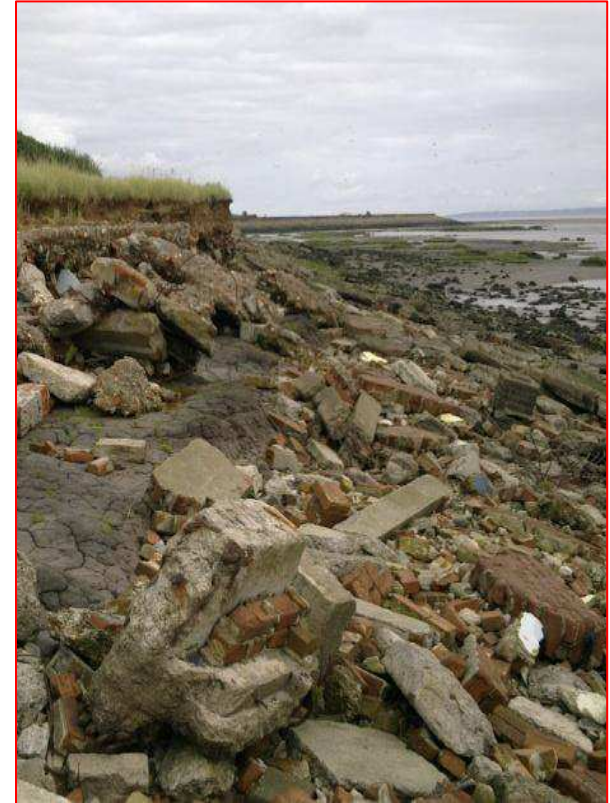
Audit Committee



Gweithio dros Gaerdydd, gweithio gyda'n gilydd
Working for Cardiff, working together



IDENTIFICATION



IDENTIFICATION AND ASSESSMENT

Welsh Government Coastal Risk Management Programme (CRMP) made a commitment by making £150 million available for borrowing to assist local authorities to meet financial pressures.

The CRMP provides a one-off opportunity for local authorities to implement transformational projects for coastal communities with Welsh Government contributing 75% of project costs.

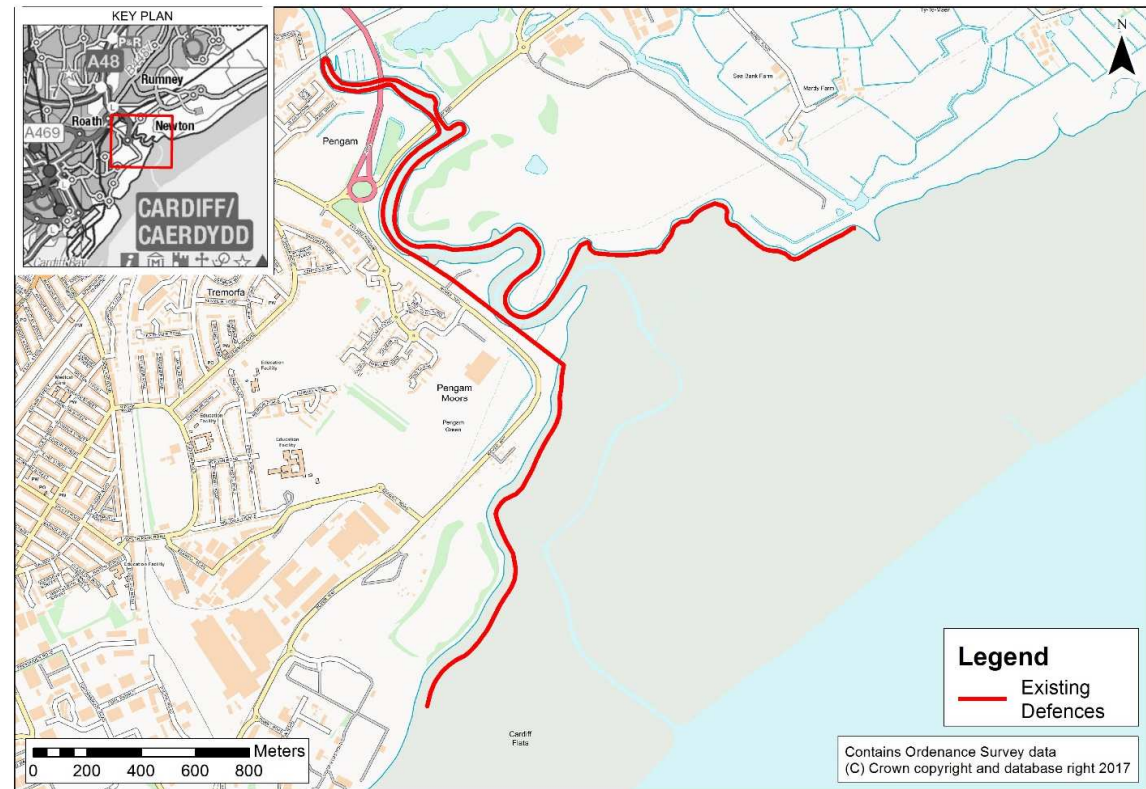
Cardiff Council have been successful in obtaining 100% funding for the production of an Outline Business Case.



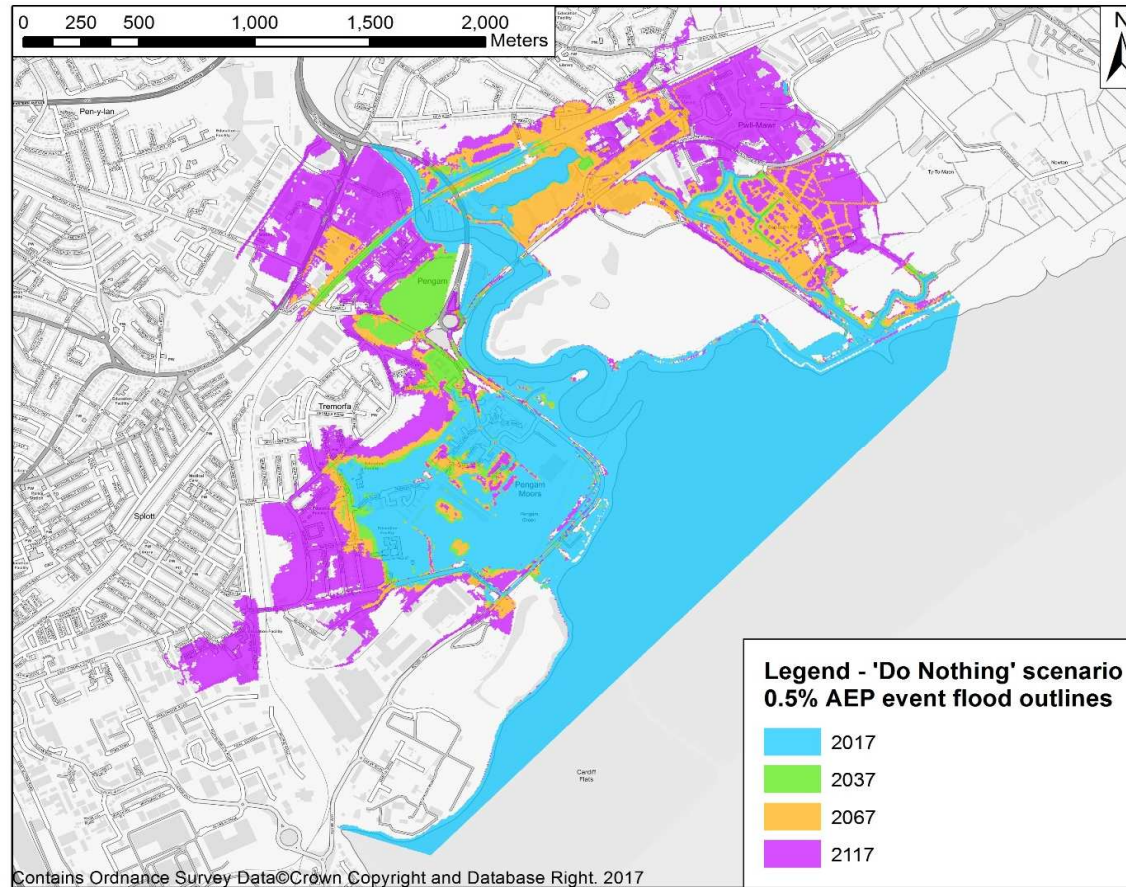
ASSESSMENT

This Outline Business Case (OBC) presents the business case and implementation plan for Cardiff Coastal Defences between Rover Way in the west and Lamby way in the east.

The project aims to improve the existing coastal and fluvial defences to provide improved protection to people and property from coastal erosion and flood risk, and prevent the erosion of two decommissioned landfill sites; The Frag Tip and Lamby Way Tip.



ASSESSMENT



Predicted flood extents for a 0.5% AEP event in 2017, 2037, 2067 and 2117



LONG LIST OPTIONS

Due to the size of the study area the defences were divided into sections based upon the type and condition of the defence and the geomorphological processes. **Long list to short list development.**

These were evaluated against the Project Objectives and Critical Success Factors and reviewed at an options shortlisting workshop e.g. removal of concrete embankment due to environmental impact.

To assess the most appropriate holistic option across the whole study frontage the options were combined to form six scheme options. **The economic analysis and preferred option assessment are based on these six options.**

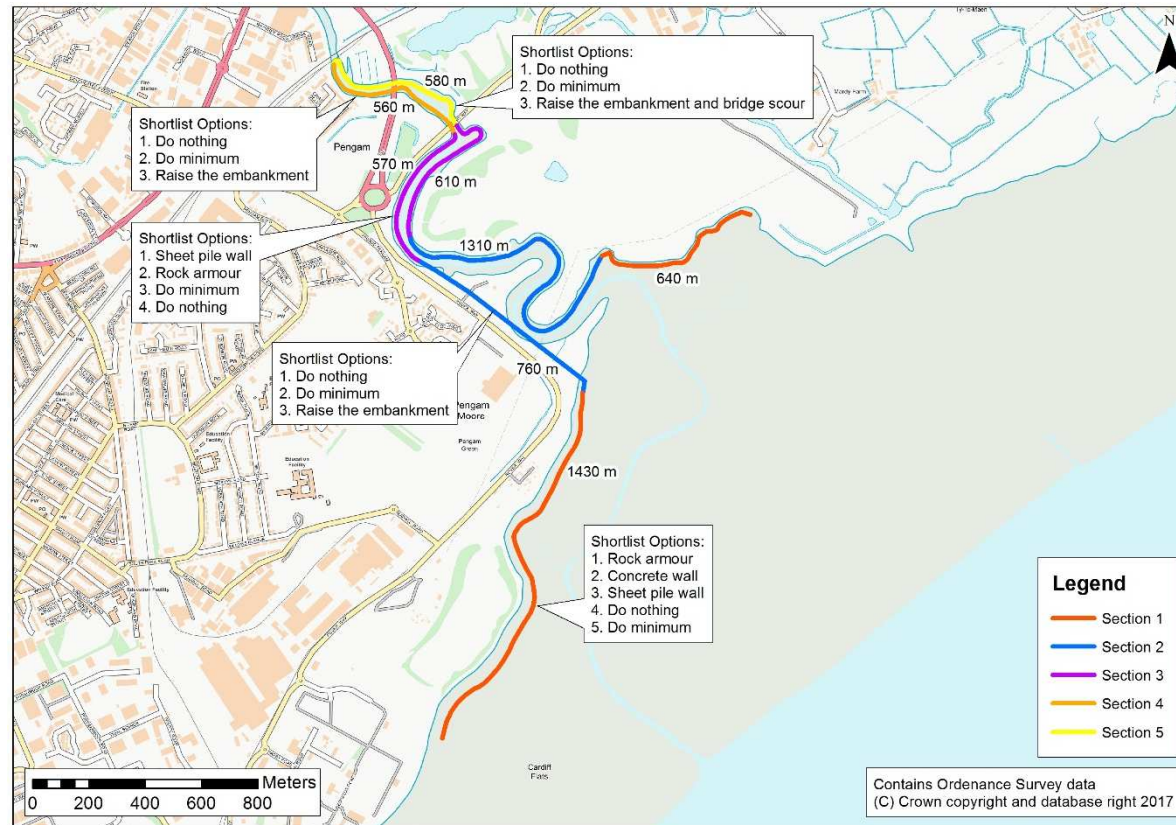


PREFERRED OPTION

- The preferred option following economic and environmental assessment is a combination of:
- Rock revetment along the coast to manage erosion and wave overtopping (Section1);
- Sheet piling along Lamby Way Roundabout (Section 3);
- Maintain Earth Embankments elsewhere and raise low points in earth embankments where required to reduce flood risk;
- Rock scour protection added to Lamby Way.



SHORT LIST OPTIONS



PREFERRED OPTIONS

ROCK REVETMENT



SHEET PILING



QUESTIONS?

